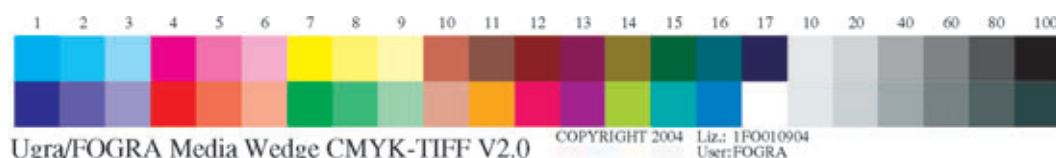


Ugra/FOGRA Media Wedge CMYK V2.0



The Ugra/FOGRA Media Wedge CMYK V2.0 is intended for the monitoring of digital proofs. It can also be used as a digital control aid to monitor the effect of imaging in CMYK mode and other pre-press work. For the acceptance of contract colour proofs the recommendations of the Print Media Standard should always be observed.

Essentially a proof can only be used as a contract proof when, for example, a Ugra/FOGRA Media Wedge is placed on the proof and the resulting CIELAB values remain within the tolerance limits. The CMYK tonal values of the Ugra/FOGRA Media Wedge Version 2.0 are based on those of the international ISO 12642 standard. The target values follow the characterization tables for the major printing conditions (to be found on the FOGRA Home Page under www.fogra.org), as recorded in the ISO 12647 series of standards.

Layouts:

- *Two-line*

Patch size 6 mm x 6 mm
Patch size 8.5 mm x 10 mm
Patch size 8.5 mm x 6 mm

- *One-line*

Patch size 8 mm x 8 mm
Patch size 6 mm x 6 mm
Patch size 4 mm x 4 mm
Patch size 3 mm x 3 mm

NB: The aperture diameter of the colour measurement device being used must be about 1 mm less than the size of the patch.

Both layouts contain versions that are suitable for automatic evaluation with a whole series of measurement systems (eg. from GretagMacbeth, Techkon and X-Rite). Separator lines have been placed between the individual colour patches to make automatic recording easier.

Order Information:

- *Two-line:*

Ugra/FOGRA Media Wedge V2.0 TIFF (PS/PDF-X3 workflow)
Ugra/FOGRA Media Wedge V2.0 EPS (PostScript workflow)

Each supply contains all two-line layouts.

- *One-line:*

Ugra/FOGRA Media Wedge V2.0 TIFF (PS/PDF-X3 workflow)
Ugra/FOGRA Media Wedge V2.0 EPS (PostScript workflow)

Each supply contains all one-line layouts.

The Print Media Standard recommends the TIFF version, because this data format can be used unlimited in ICC based Colour Management Systems. The EPS file is needed only for evaluation of the workflow when Colour Management Systems can integrate profiles in EPS files.

Please state the name of the firm or the name of the user for personalization, and the operating system (Macintosh or Windows).

Price:

On request
(see: Online Shop at www.fogra.org)
FOGRA members receive a 25 % discount.

The Media Wedge comes together with instructions for use and a reference file (MKPruef.xls) showing the L*a*b* target values.

Anyone who is interested should contact:

FOGRA

Graphic Technology Research Association
Streitfeldstr. 19, 81673 Munich, Germany
Telephone: +49 89 43182-160
Fax: +49 89 43182-100
E-mail: glatz@fogra.org
Web site: www.mediawedge.com

Layouts of Ugra/FOGRA Media Wedge CMYK V2.0

Left side:
Two-line

Right side:
One-line

